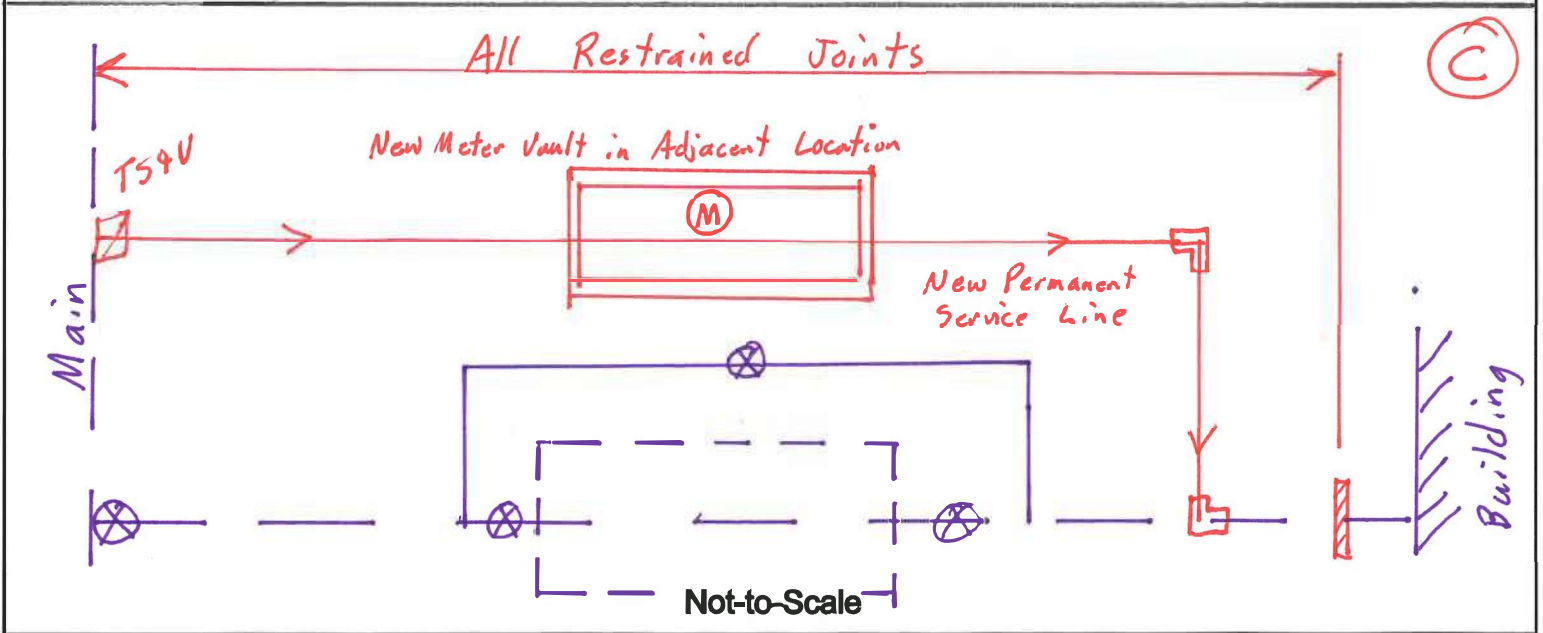
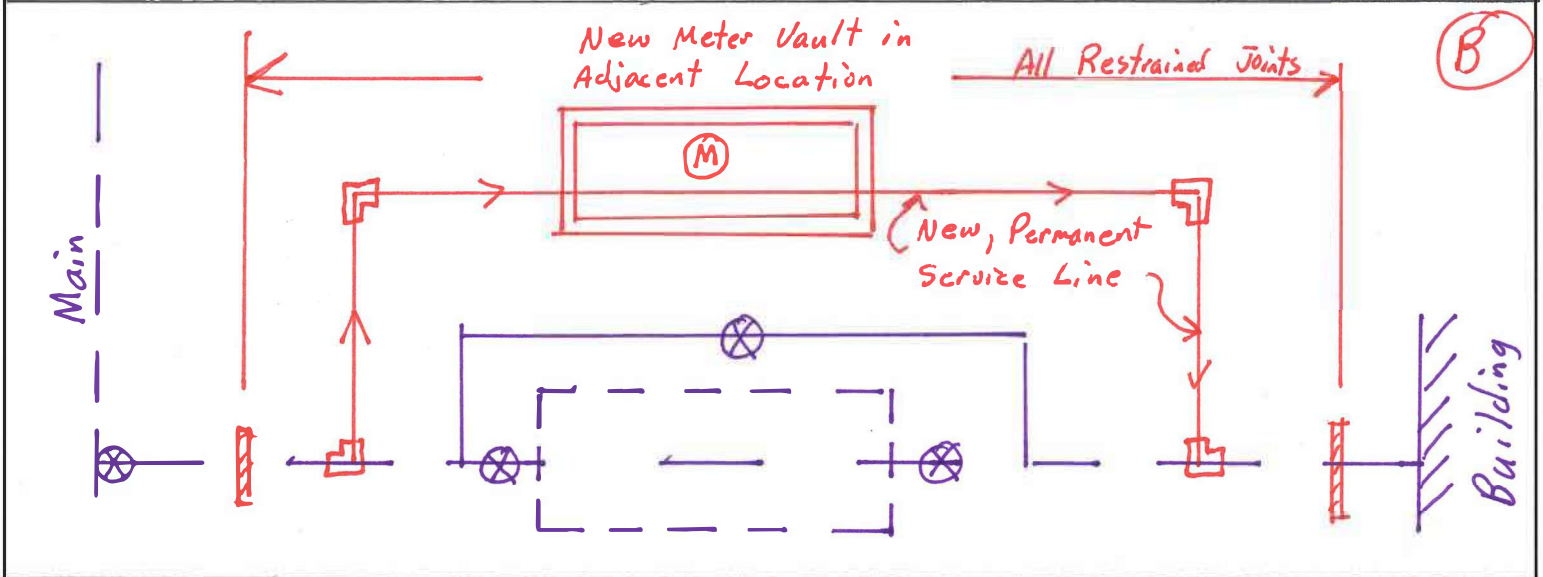
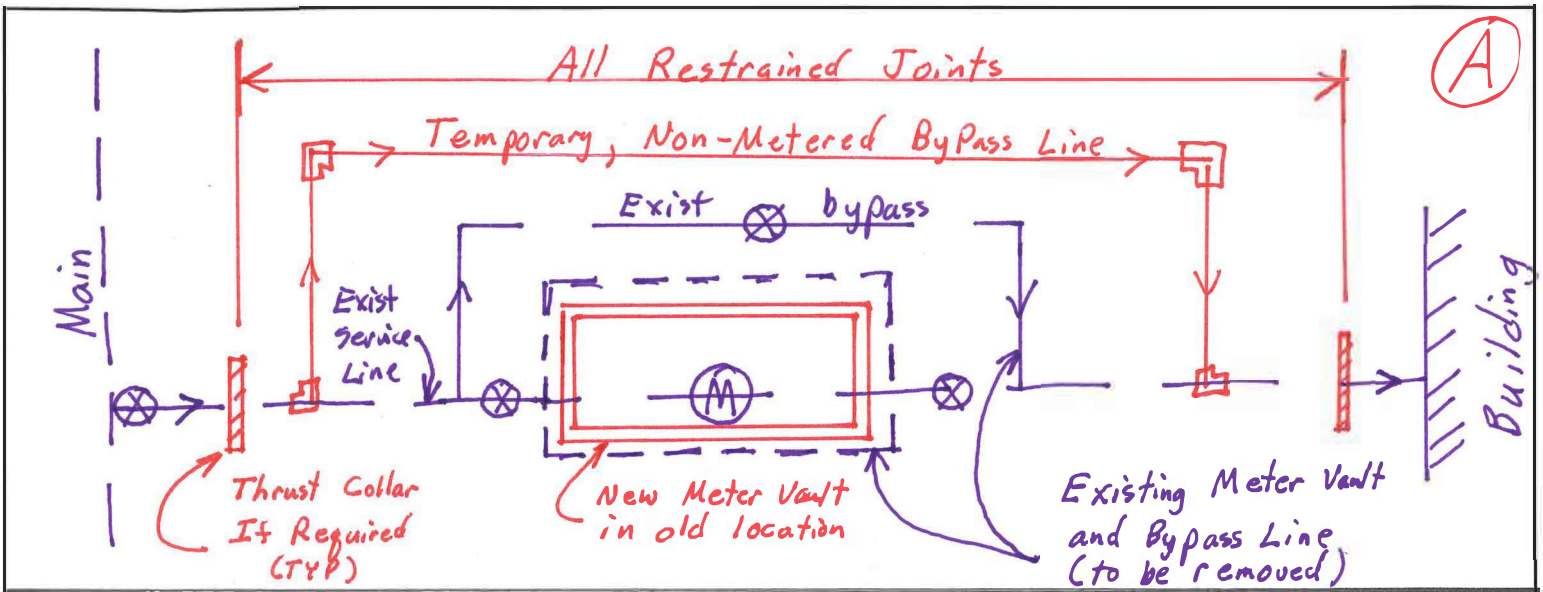


APPENDIX A

SITE OPTIONS SKETCH

This page intentionally left blank.



Site Options Sketch
 2024 Meter Vault Replacement Program
 Project # 281296.00



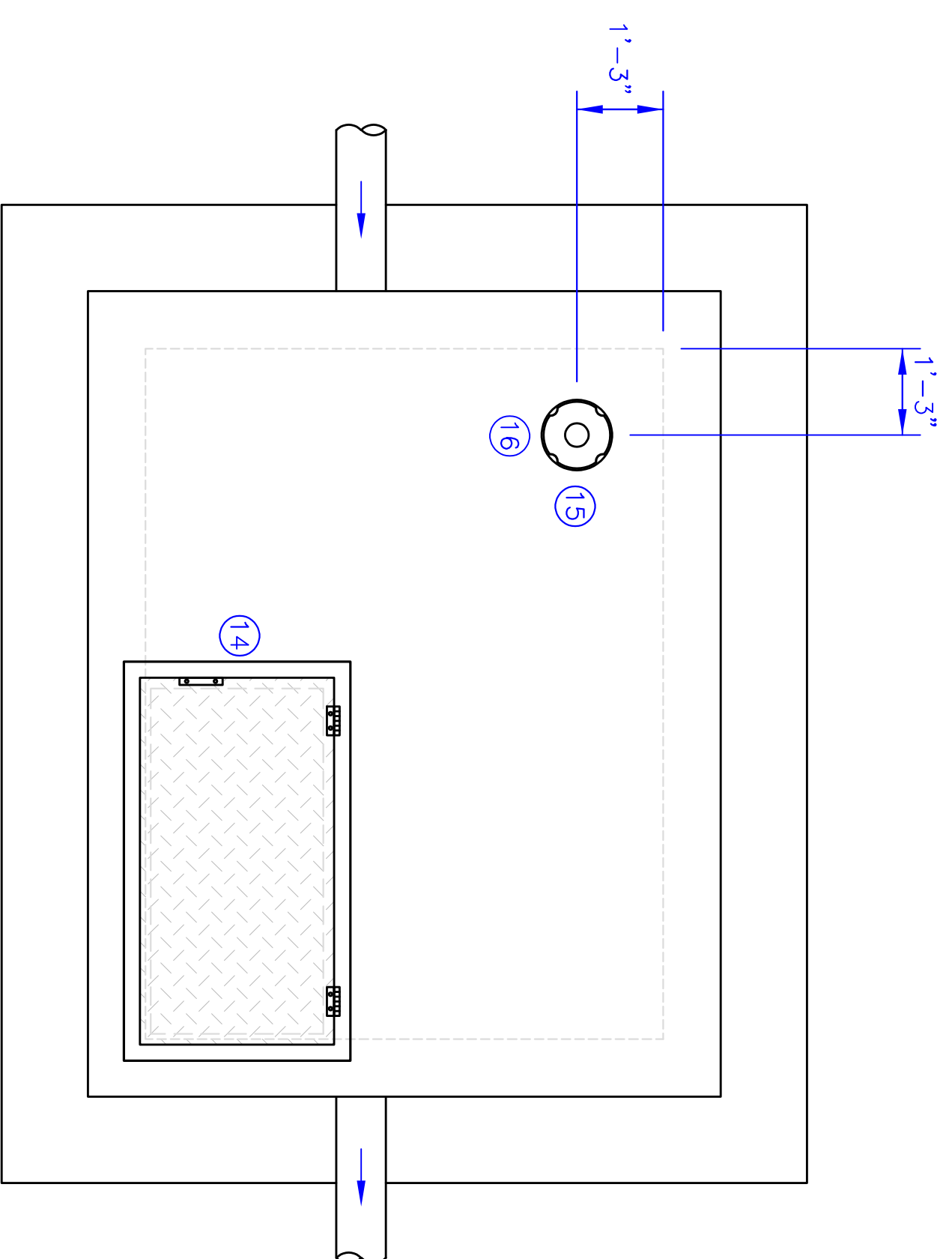
This page is intentionally left blank.

APPENDIX B

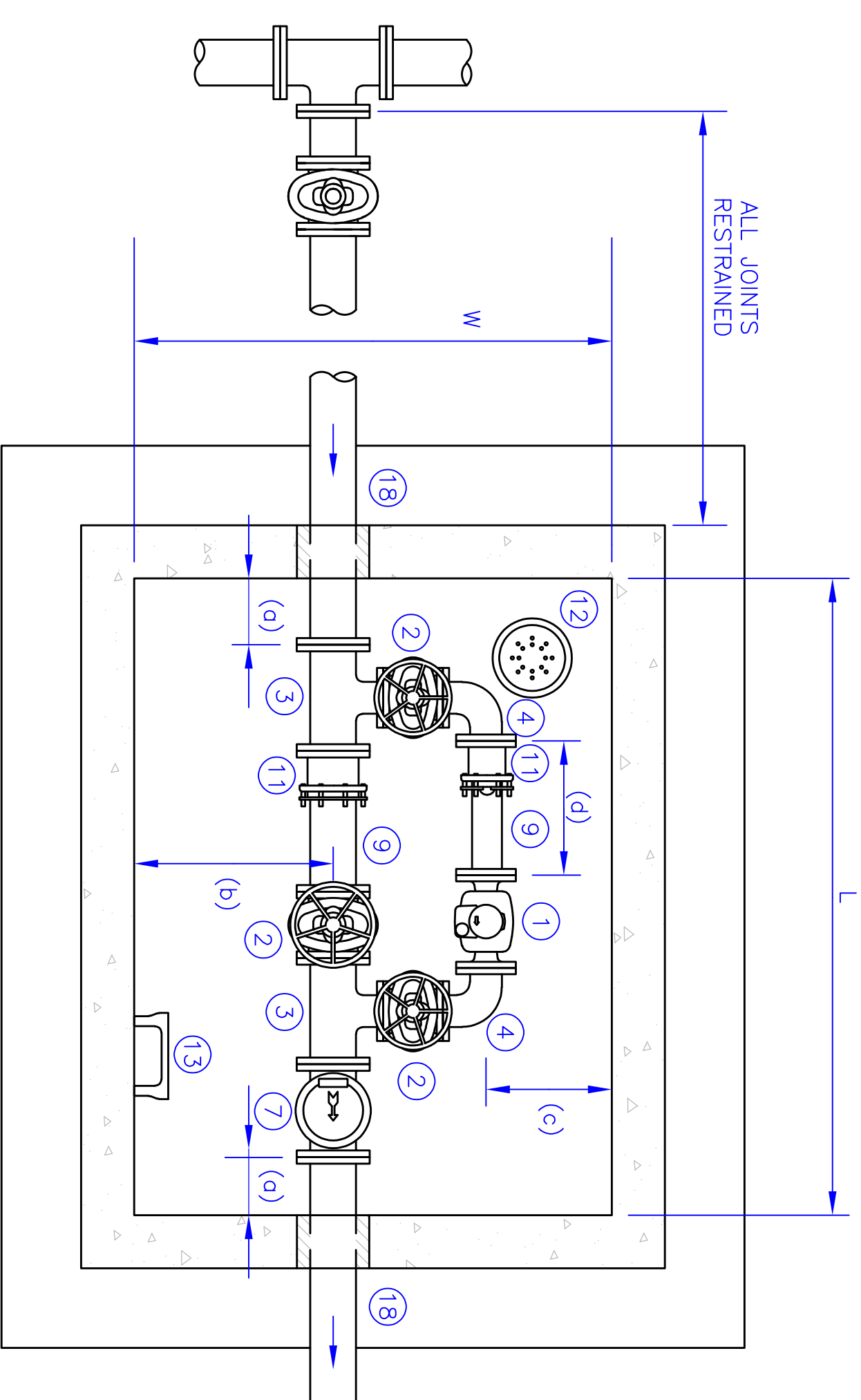
WATER DETAILS 3

(DT – 025)

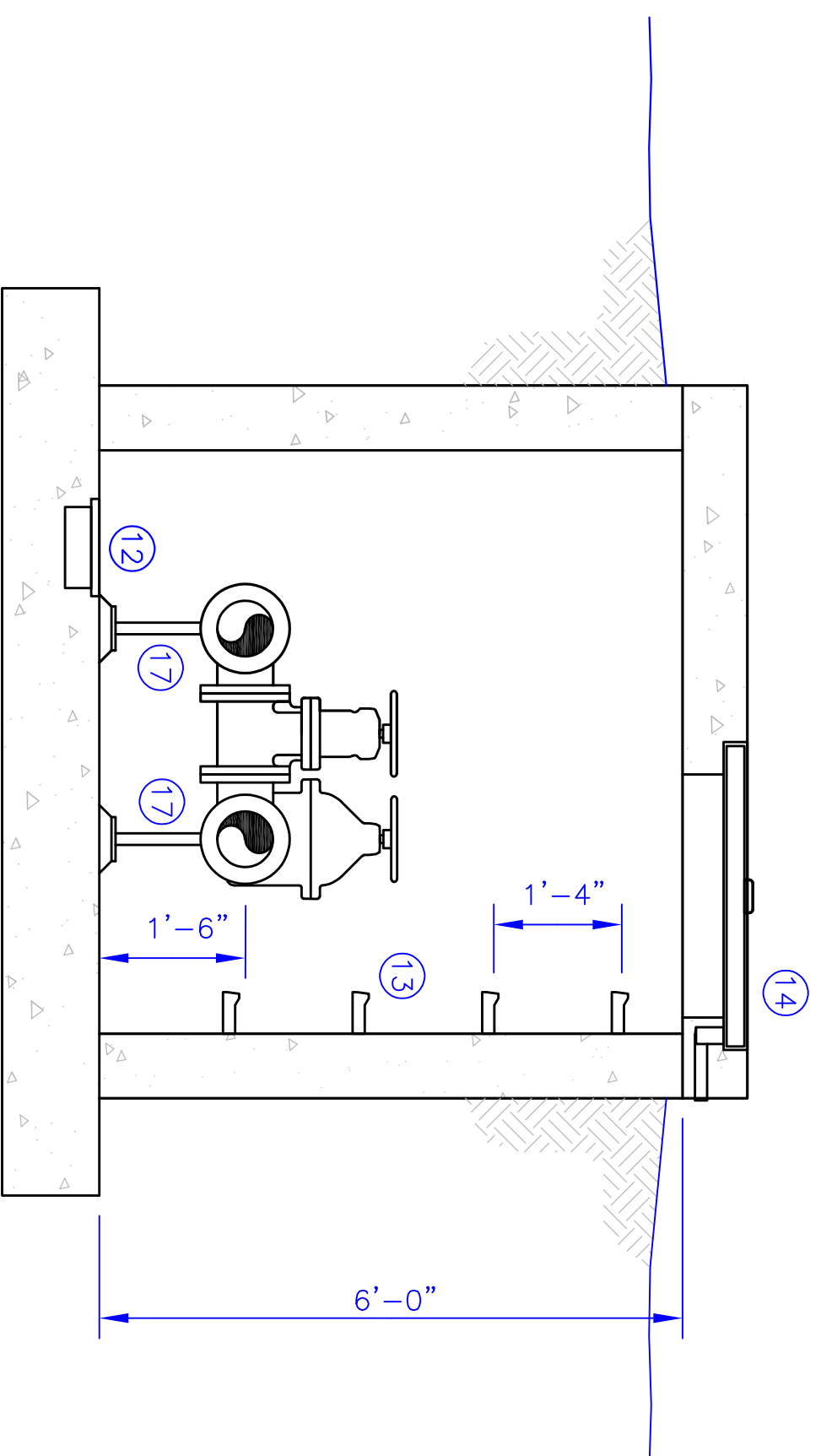
This page intentionally left blank.



TOP VIEW
NO SCALE



PIPING PLAN
NO SCALE



SECTION VIEW
NO SCALE

METER SIZE	VAULT LENGTH (L) (feet)	VAULT WIDTH (W) (feet)	CLEAR DIM (a) (in)	CLEAR DIM (b) (in)	CLEAR DIM (c) (in)	CLEAR DIM (d) (in)	MIN SPOOL (a) (in)
3"	8	6	16	30	20		15
4"	8	6	9	30	17		20
6"	10	7	8	30	23		30
8"	12	7	11	30	21		40
10"	14	8	7	30	27		50

METER VAULT DIMENSION TABLE

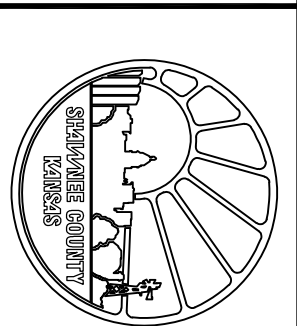
- NOTES**
1. VAULT TOP, BASE AND WALLS SHALL BE MANUFACTURED OF REINFORCED PRECAST CONCRETE FOR BOX STRUCTURES IN ACCORDANCE WITH APPLICABLE SECTIONS OF THE CITY OF TOPEKA AND SHAWNEE COUNTY STANDARD TECHNICAL SPECIFICATIONS, LATEST EDITION.
 2. PIPING SHALL BE DUCTILE IRON PIPE (DIP) AND ALL MATERIALS, FITTINGS, AND EQUIPMENT SHALL BE IN ACCORDANCE WITH SECTION 8 OF THE CITY OF TOPEKA AND SHAWNEE COUNTY STANDARD TECHNICAL SPECIFICATIONS, LATEST EDITION, UNLESS NOTED OTHERWISE.
 3. CONTRACTOR TO CONFIRM WITH CITY IF: (a) CHECK VALVE IS REQUIRED; and/or (b) IF A LOWER HEADLOSS, VALMATIC SWING-FLEX CHECK VALVE IS REQUIRED.
 4. CONTRACTOR TO CONFIRM WITH CITY IF ACCESS HATCH WILL REQUIRE ADDITIONAL DESIGN TO: (a) PREVENT WATER INTRUSION; AND/OR (b) ACCOMMODATE AASHTO HS-25 TRAFFIC LOADING.
 5. METER SHALL BE NEPTUNE MACH 10 ULTRASONIC METER (SHORT LAY LENGTH) AND WILL BE PROVIDED BY THE CITY.
 6. CONTRACTOR TO CORE INLET/OUTLET PIPE HOLES IN THE FIELD AFTER VERIFYING EXISTING PIPE SIZES, MATERIALS, AND ELEVATIONS.

- 1 ULTRASONIC METER (SUPPLIED BY CITY)
- 2 FL GATE VALVE W/HANDWHEEL (CLOCKWISE TO OPEN)
- 3 FL REDUCING TEE
- 4 FL 90° BEND
- 5 NOT USED
- 6 NOT USED
- 7 CHECK VALVE* IF REQUIRED (DEZURIK/APCO 600A GLOBE, OR EQUAL. SEE NOTE #3)
- 8 NOT USED
- 9 FLXPE PIPING
- 10 NOT USED
- 11 FLANGED COUPLING ADAPTER (EBAA MEGAFLANGE SERIES 2100, ROMAC ALPHA XL FC OR EQUAL)
- 12 12" SWMP PAN W/LID (MEADOW BURKE/BOWCO BSP-2, OR EQUAL)
- 13 PS2 STEP (4 REQ'D) (MA INDUSTRIES PS2, OR EQUAL)
- 14 24"x36" SINGLE LEAF ALUMINUM HATCH (HS-20) (USF MODEL THS, OR EQUAL. SEE NOTE #4)
- 15 12" METER RING & COVER (SUPPLIED BY CITY)
- 16 2" DIA HOLE
- 17 ADJUSTABLE PIPE SUPPORT (3 REQ'D) (STANDON 589/592, OR EQUAL)
- 18 FLEXIBLE WATERTIGHT PIPE SEAL (PRESS-SEAL PSX DIRECT DRIVE, OR EQUAL. SEE NOTE #6)
- 19 NOT USED

LIST OF MATERIALS

NO.	DATE:	REVISION	BY:

EDITED BY:	XXX
APP'D BY:	MBS



SHAWNEE COUNTY, KANSAS
PUBLIC WORKS DEPARTMENT
1315 NW SALINE
TOPEKA, KS 66618
(785) 253-7102

TOPEKA
Public Works
ENGINEERING
620 SE MADISON St. • 2nd Floor • TOPEKA, KS 66607
Phone: (785) 368-3842 • Fax: (785) 368-3881

STANDARD DETAILS

WATER DETAILS 3
(DT-025)

DATE: _____
SHEET: _____
PROJ.: _____

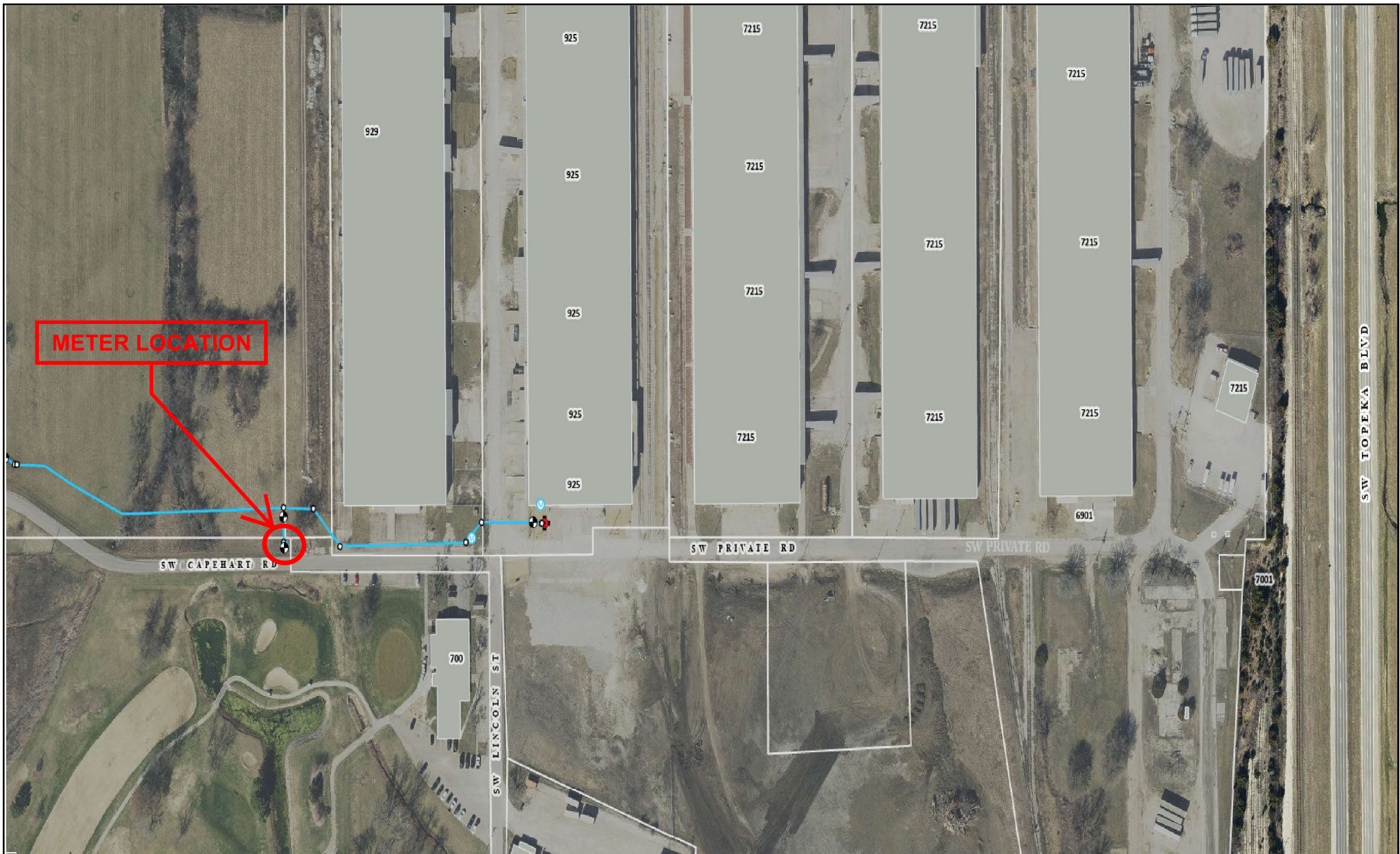
This page is intentionally left blank.

APPENDIX C

GROUP 1-A/1-B-2

VICINITY MAPS, SITE MAPS and PICTURES

This page intentionally left blank.

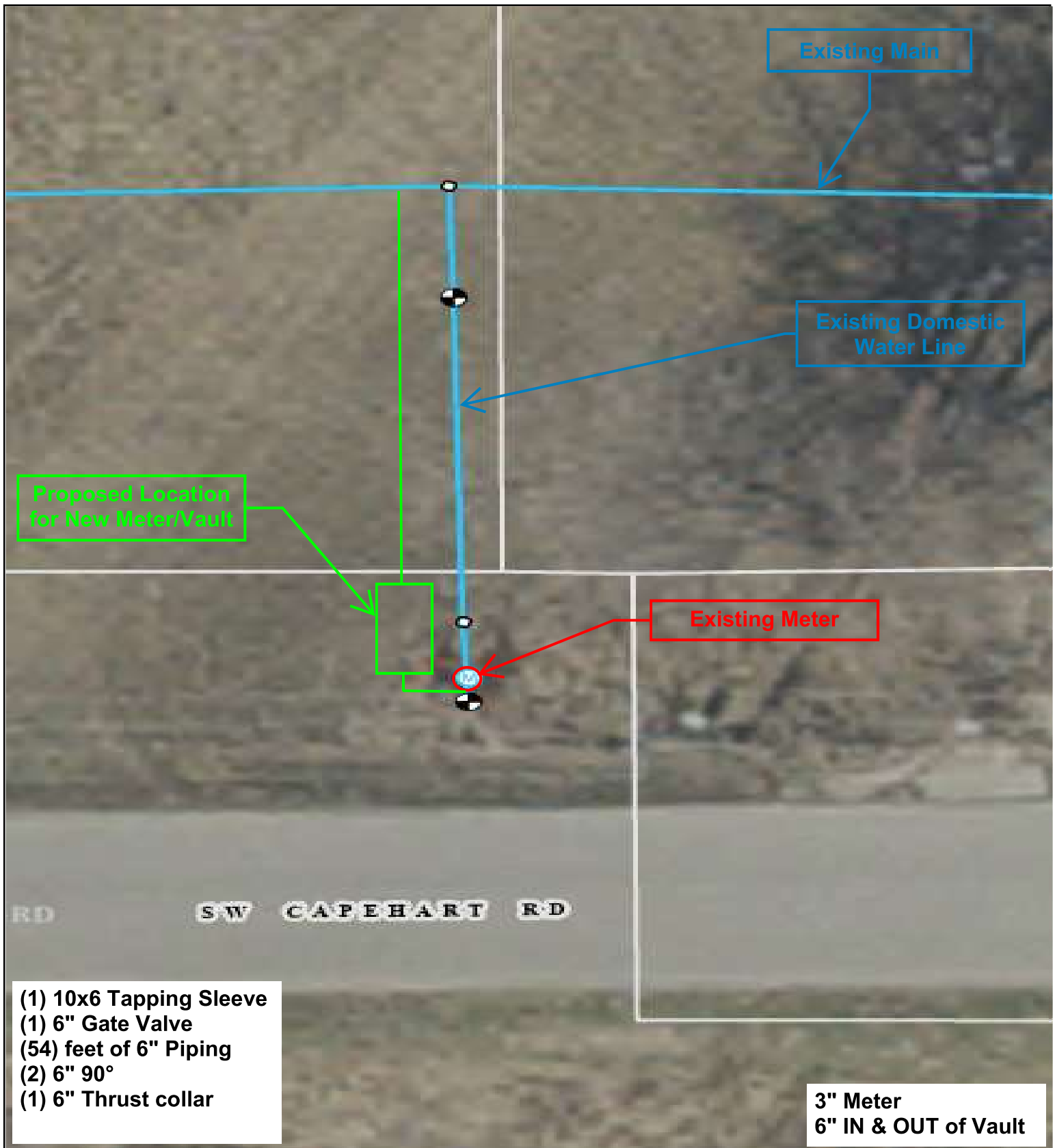


Not-to-Scale

700 SW Capehart Road
Forbes Golf Course
3" Water Meter Replacement
City Project #281296.00
Site Option- C



CITY OF TOPEKA
UTILITIES



Not-to-Scale

700 SW Capehart Road
 Forbes Golf Course
 3" Water Meter Replacement
 City Project # 281296.00
 Site Option- C





Not-to-Scale

700 SW Capehart Road
Forbes Golf Course
3" Water Meter Replacement
City Project #281296.00
Site Option- C



CITY OF TOPEKA
UTILITIES

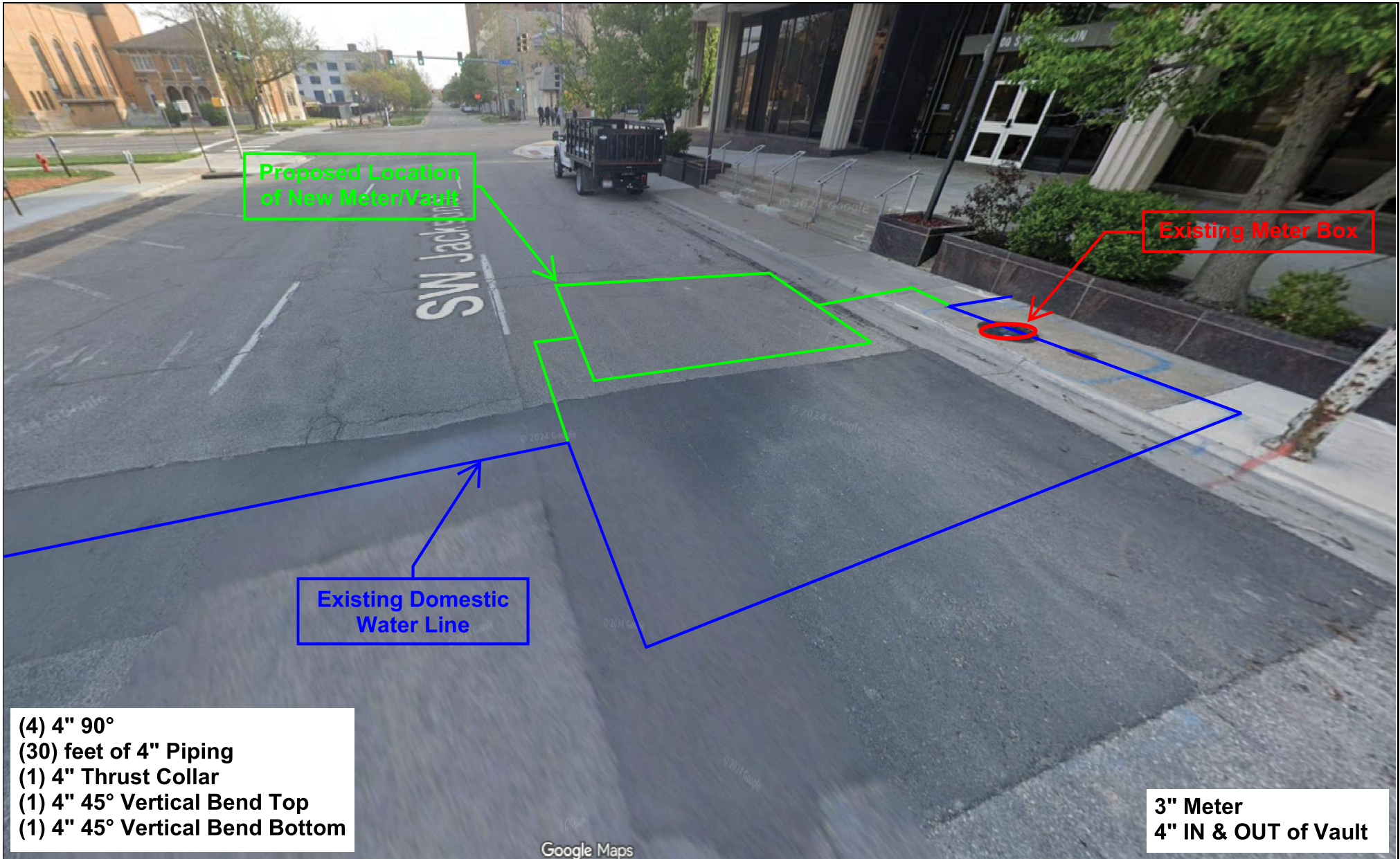


Not-to-Scale

800 SW Jackson St
3" Water Meter Replacement
City Project #281296.00
Site Option- B or C



CITY OF TOPEKA
UTILITIES



Proposed Location of New Meter/Vault

Existing Meter Box

Existing Domestic Water Line

- (4) 4" 90°
- (30) feet of 4" Piping
- (1) 4" Thrust Collar
- (1) 4" 45° Vertical Bend Top
- (1) 4" 45° Vertical Bend Bottom

3" Meter
4" IN & OUT of Vault

Not-to-Scale

800 SW Jackson
 3" Water Meter Replacement
 City Project # 281296.00
 Site Option- B



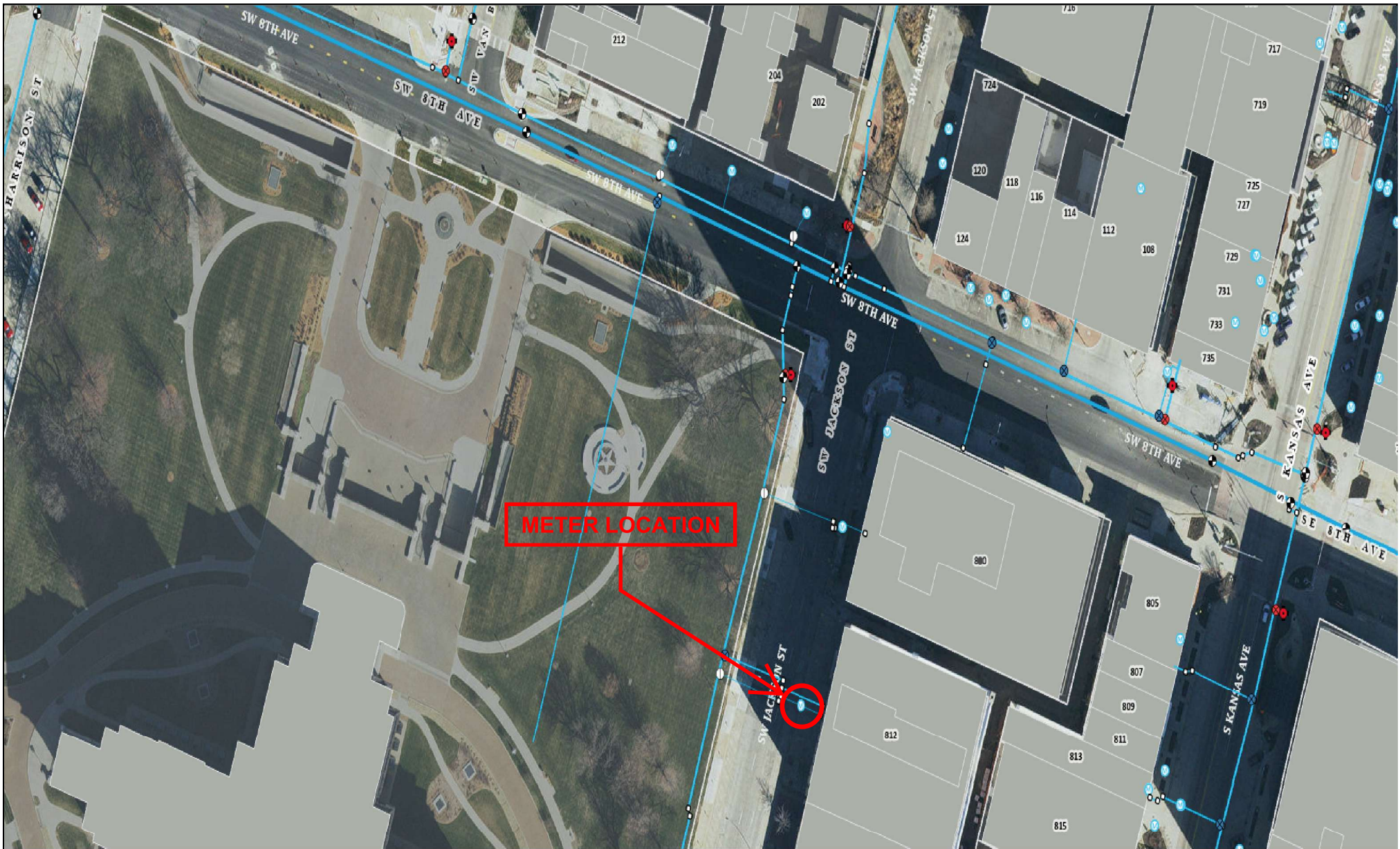


Not-to-Scale

800 SW Jackson
3" Water Meter Replacement
City Project # 281296.00
Site Option- B or C



CITY OF TOPEKA
UTILITIES

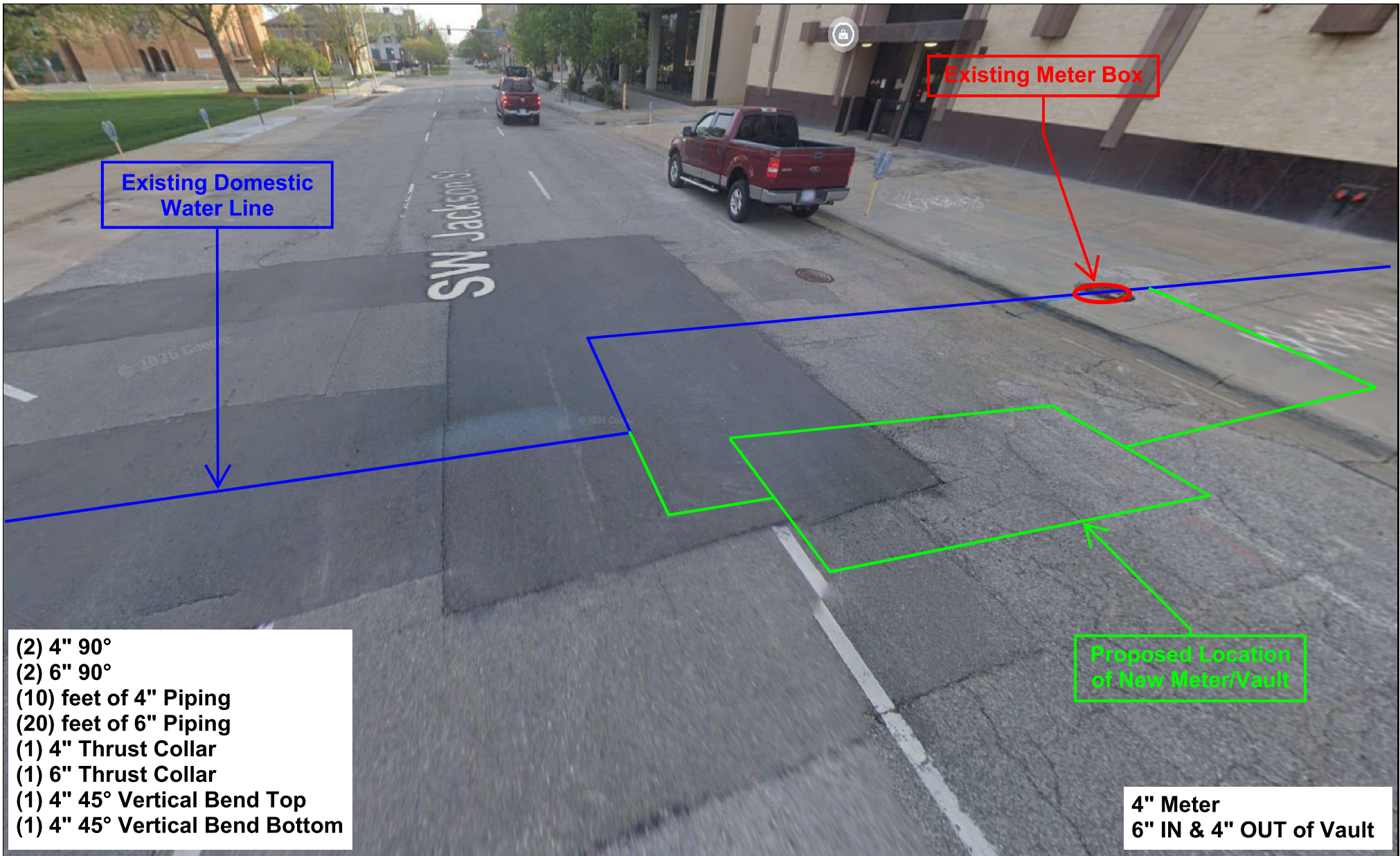


Not-to-Scale

812 SW Jackson St
4" Water Meter Replacement
City Project #281296.00
Site Option- B or C



CITY OF TOPEKA
UTILITIES



Not-to-Scale

812 SW Jackson
4" Water Meter Replacement
City Project # 281296.00
Site Option- B



CITY OF TOPEKA
UTILITIES

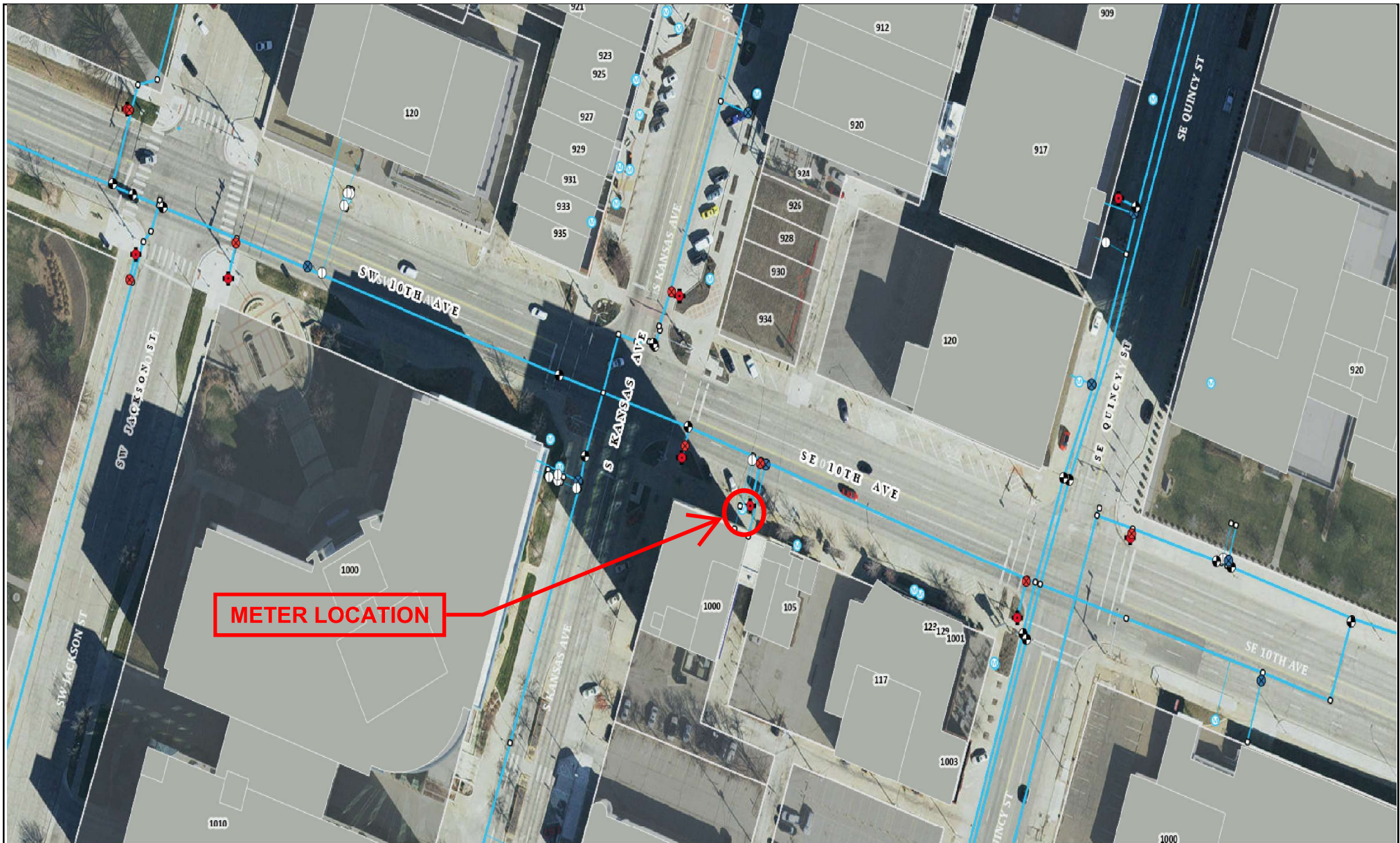


Not-to-Scale

812 SW Jackson St
4" Water Meter Replacement
City Project # 281296.00
Site Option- B or C



CITY OF TOPEKA
UTILITIES

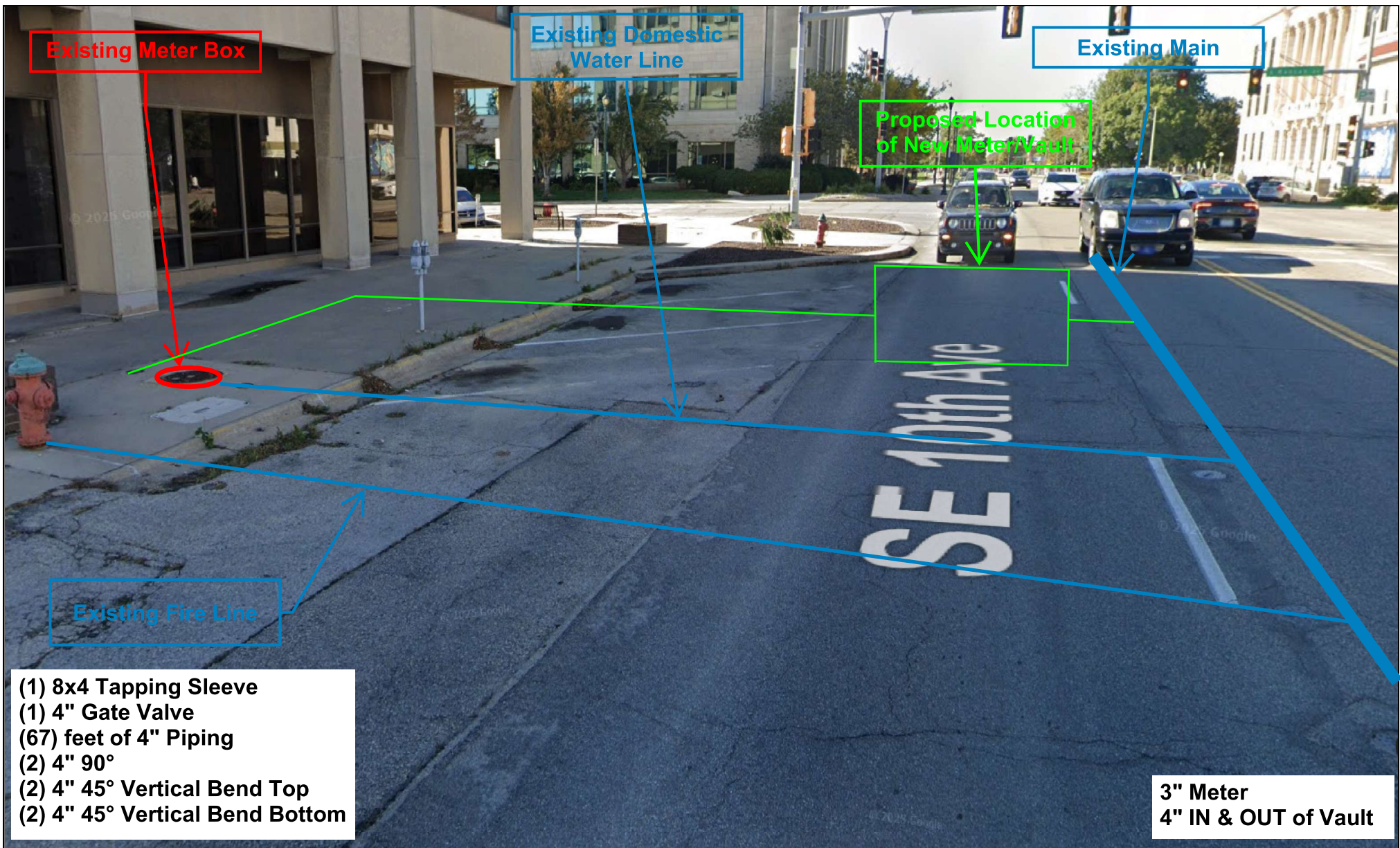


Not-to-Scale

1000 S Kansas Ave
3" Water Meter Replacement
City Project #281296.00
Site Option- C



CITY OF TOPEKA
UTILITIES



Not-to-Scale

1000 S Kansas Ave
 3" Water Meter Replacement
 City Project # 281296.00
 Site Option- C



CITY OF TOPEKA
UTILITIES



Not-to-Scale

1000 S Kansas Ave 3" Water Meter Replacement
City Project # 281296.00
Site Option- C



CITY OF TOPEKA
UTILITIES

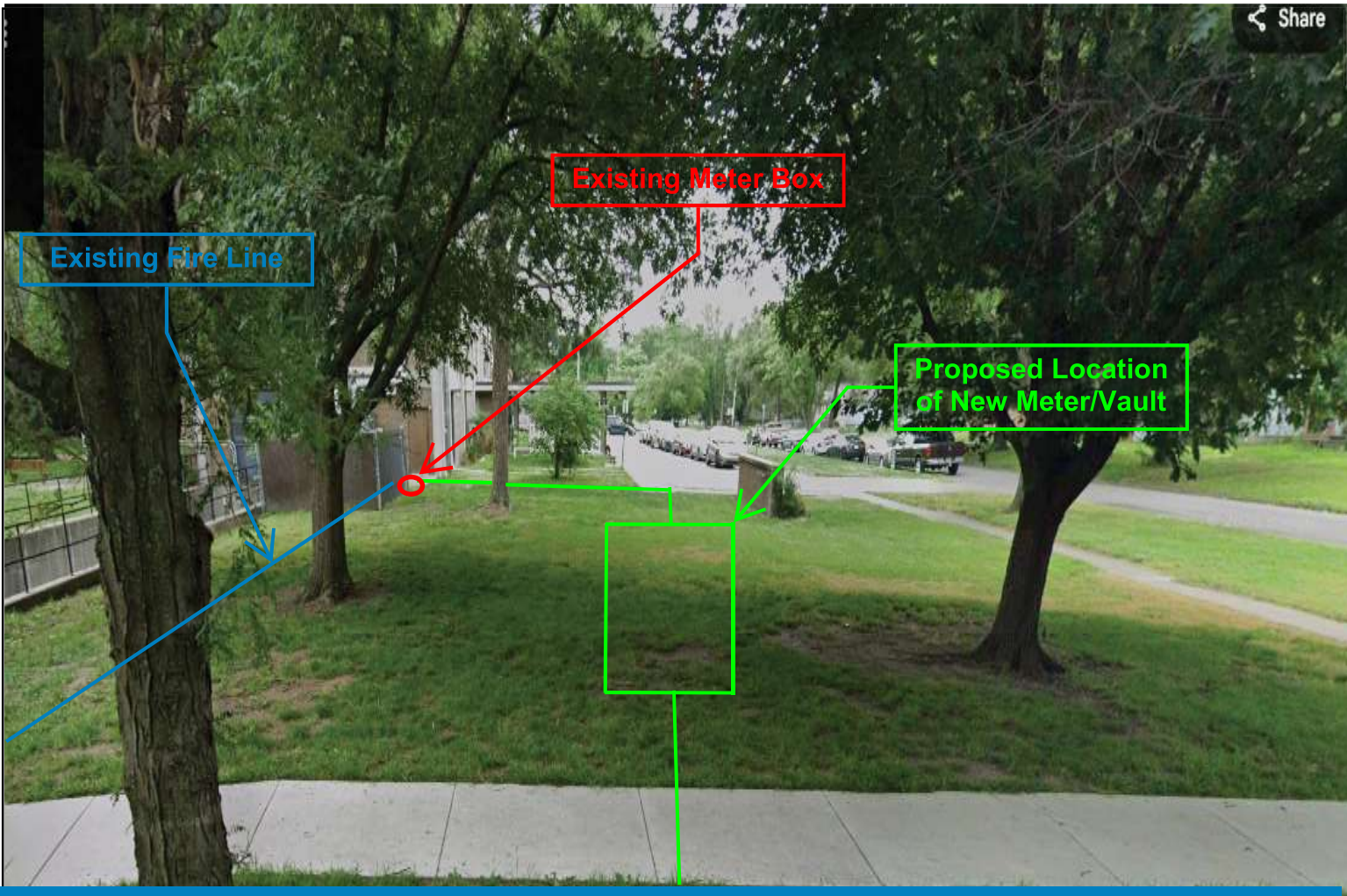


Not-to-Scale

1312 SW Polk St
Topeka Housing Authority
4" Water Meter Replacement
City Project #281296.00
Site Option- C



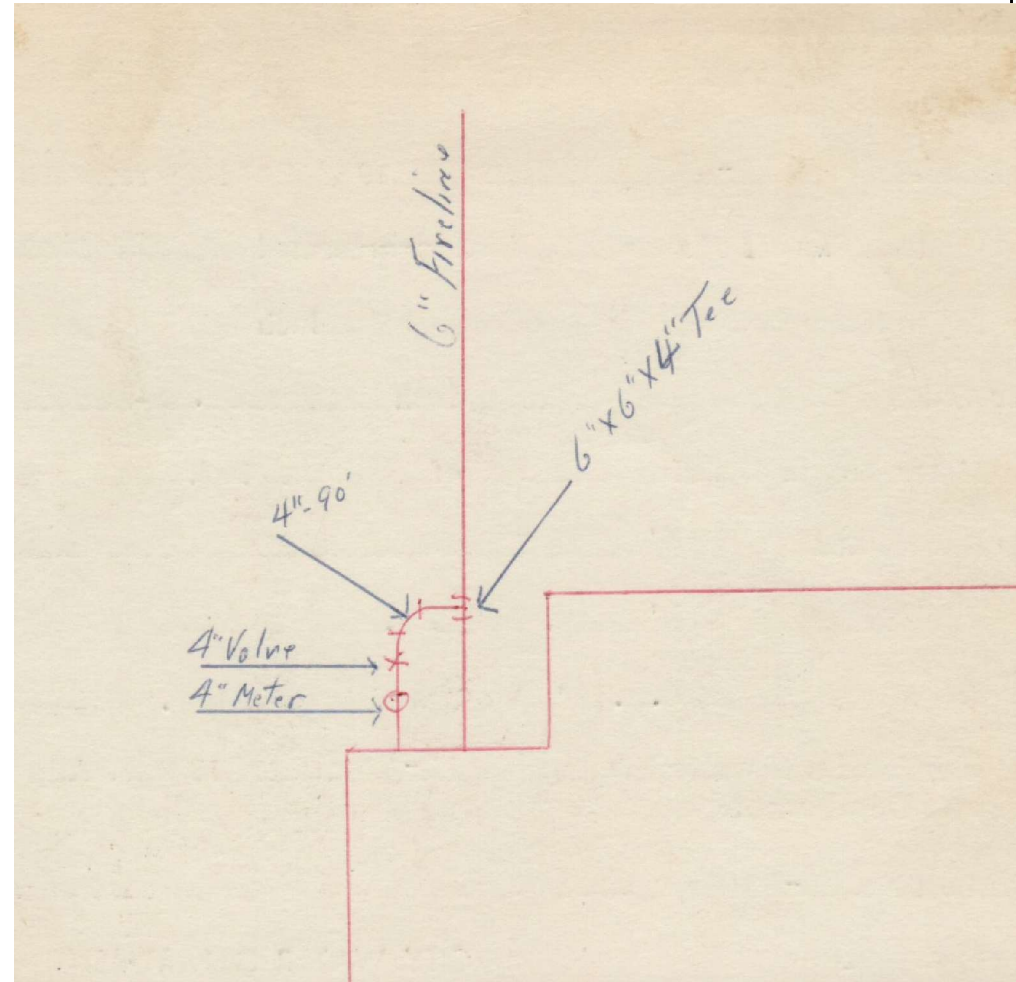
CITY OF TOPEKA
UTILITIES



Not-to-Scale

1312 SW Polk St
 Topeka Housing Authority
 4" Water Meter Replacement
 City Project # 281296.00
 Site Option- C





Not-to-Scale

1312 SW Polk St
Topeka Housing Authority
4" Water Meter Replacement
City Project # 281296.00
Site Option- C



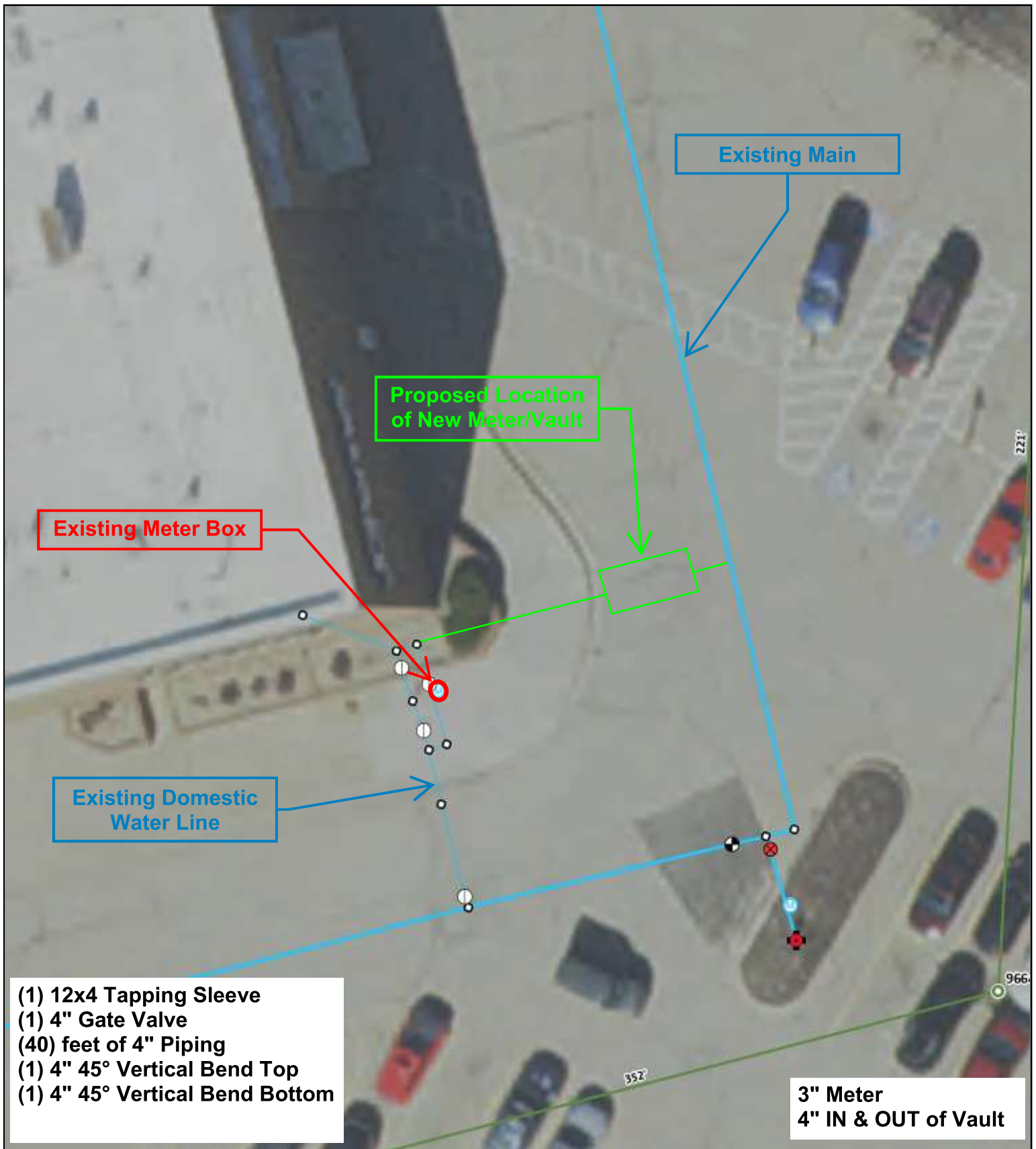


Not-to-Scale

1821 SW Wanamaker Road
3" Water Meter Replacement
City Project #281296.00 Site Option- C



CITY OF TOPEKA
UTILITIES



- (1) 12x4 Tapping Sleeve
- (1) 4" Gate Valve
- (40) feet of 4" Piping
- (1) 4" 45° Vertical Bend Top
- (1) 4" 45° Vertical Bend Bottom

**3" Meter
4" IN & OUT of Vault**

Not-to-Scale

1821 SW Wanamaker
 3" Water Meter Replacement
 City Project # 281296.00
 Site Option- C





Not-to-Scale

1821 SW Wanamaker
3" Water Meter Replacement
City Project # 281296.00
Site Option- C



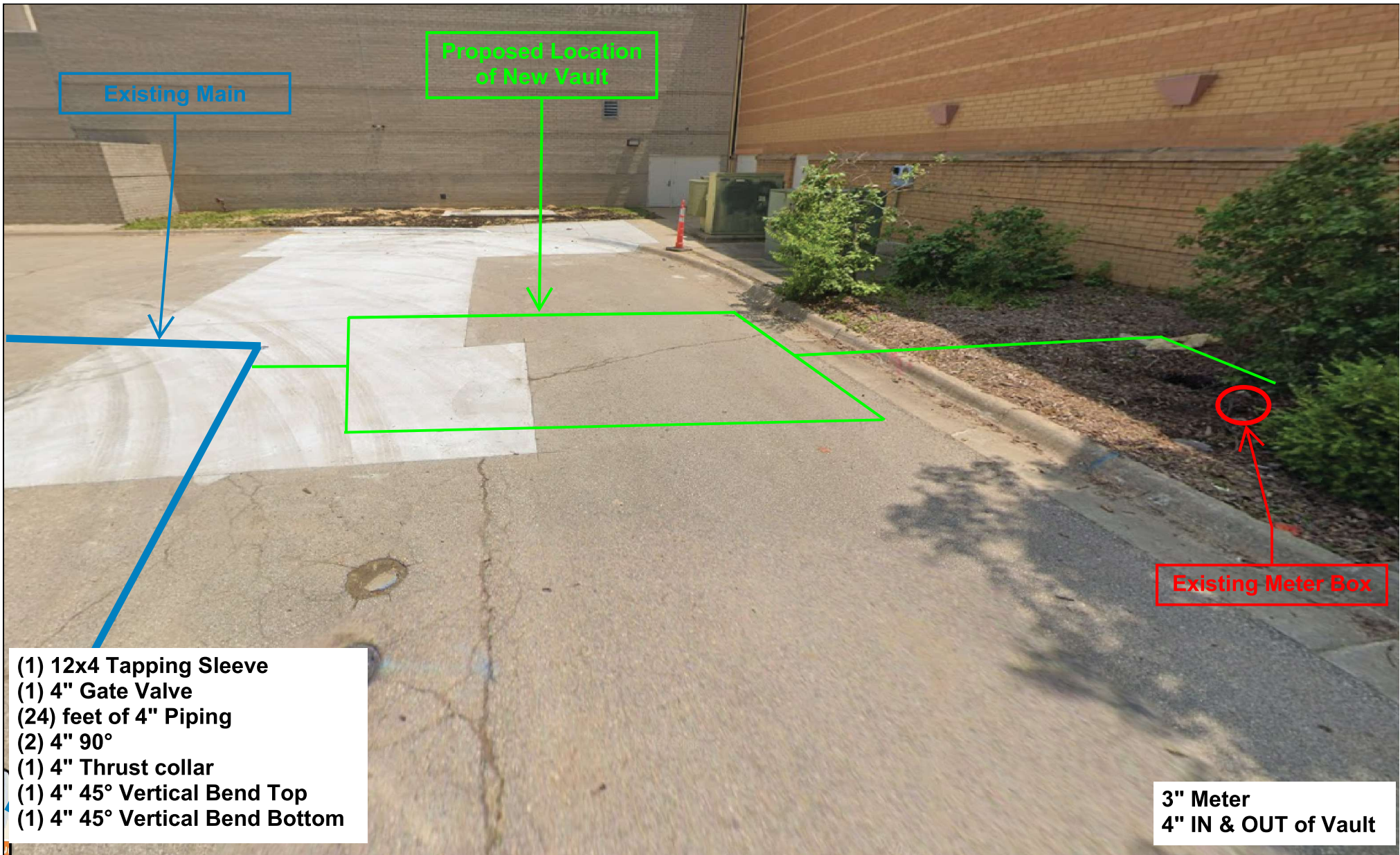
CITY OF TOPEKA
UTILITIES



Not-to-Scale

1831 SW Wanamaker Road
3" Water Meter Replacement
City Project #281296.00
Site Option- C





Not-to-Scale

1831 SW Wanamaker
3" Water Meter Replacement
City Project # 281296.00
Site Option- C



CITY OF TOPEKA
UTILITIES

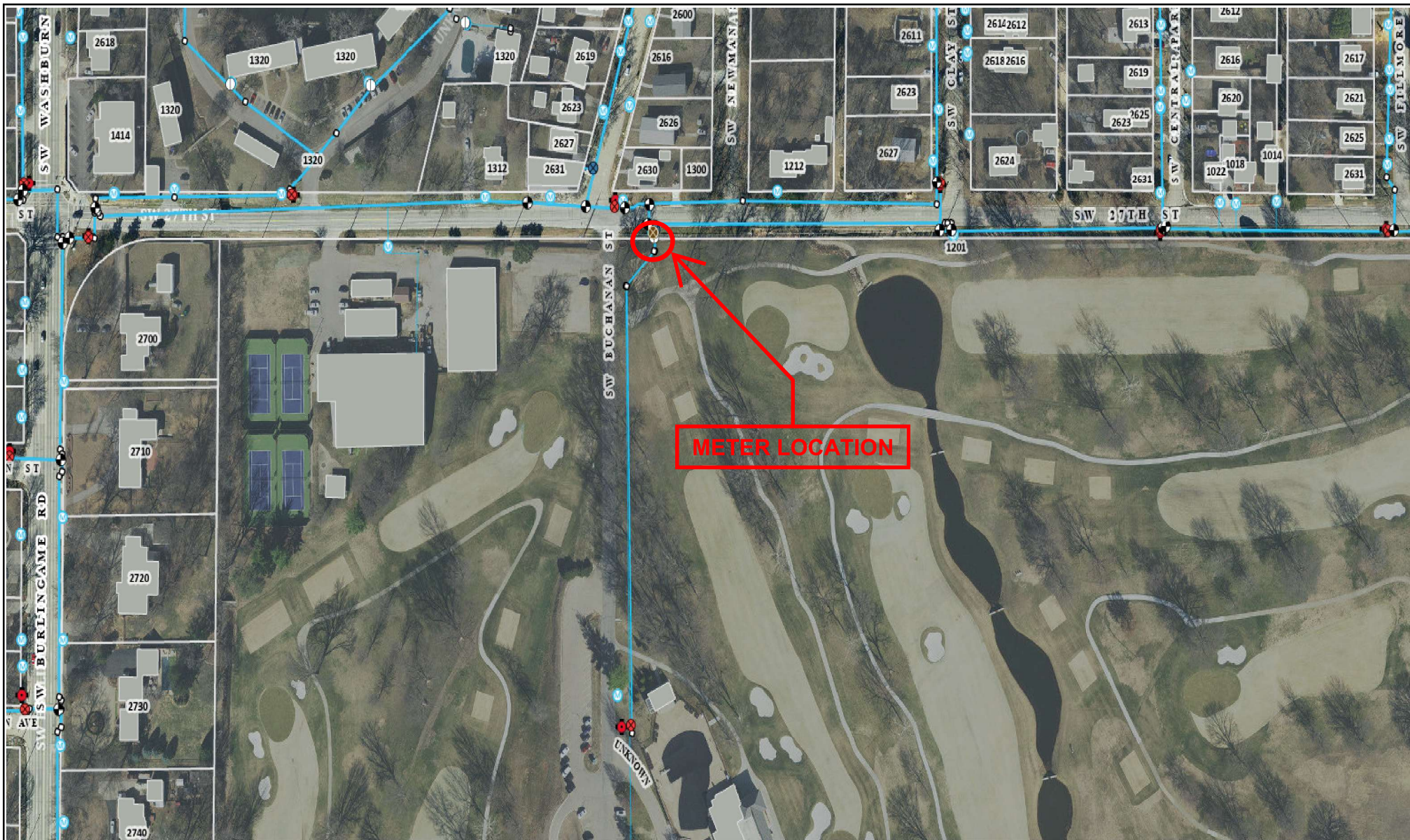


Not-to-Scale

1831 SW Wanamaker
3" Water Meter Replacement
City Project # 281296.00
Site Option- C



CITY OF TOPEKA
UTILITIES

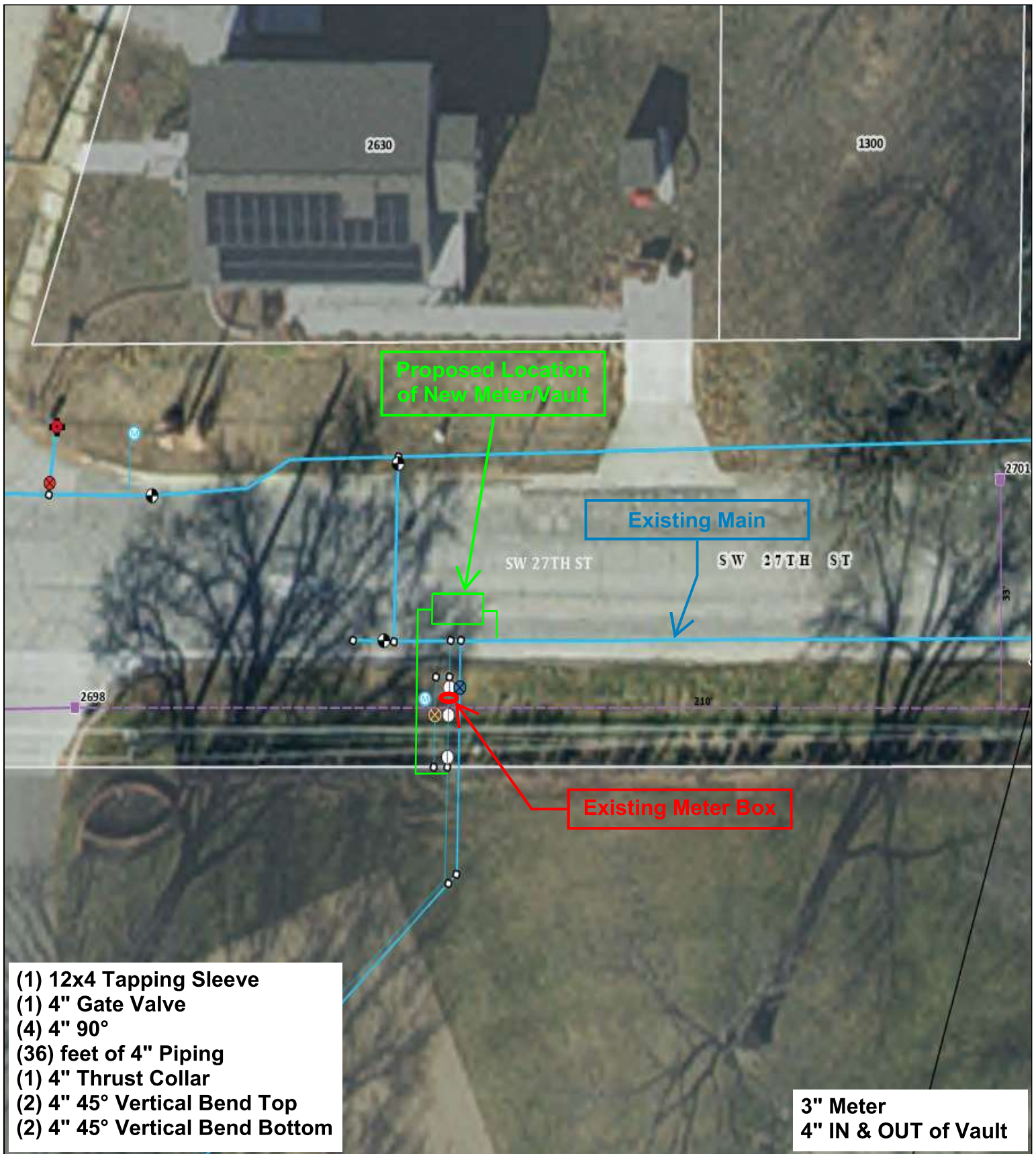


Not-to-Scale

2700 SW Buchanan St
Topeka Country Club
3" Water Meter Replacement
City Project #281296.00
Site Option- C



CITY OF TOPEKA
UTILITIES



Not-to-Scale

2700 SW Buchanan St
 Topeka Country Club
 3" Water Meter Replacement
 City Project #281296.00
 Site Option- C



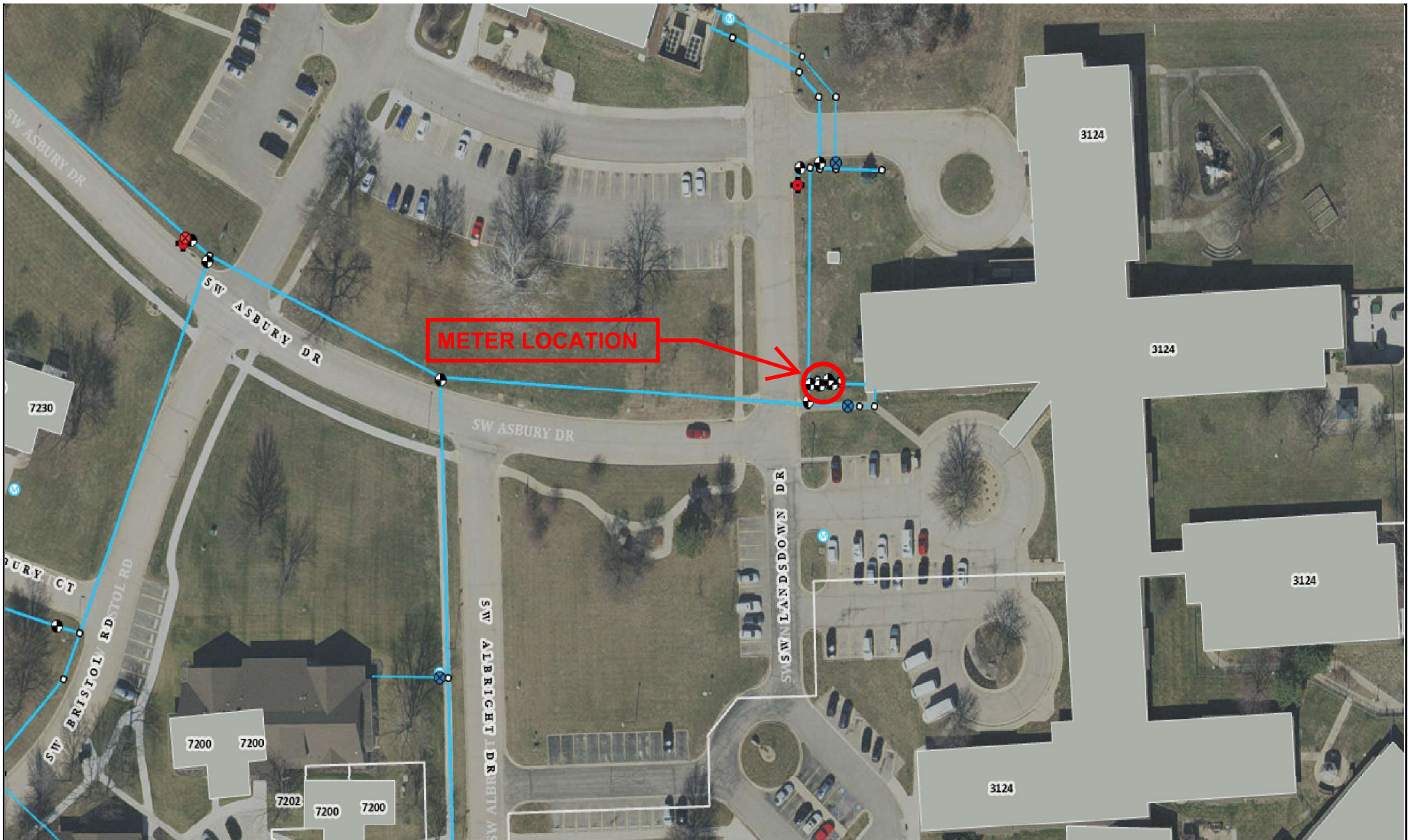


Not-to-Scale

2700 SW Buchanan St
Topeka Country Club
3" Water Meter Replacement
City Project #281296.00
Site Option- C



CITY OF TOPEKA
UTILITIES



Not-to-Scale

3220 SW Albright Drive B
The Gardens at Aldersgate
3" Water Meter Replacement
City Project #281296.00
Site Option- C



CITY OF TOPEKA
UTILITIES



- (1) 8x4 Tapping Sleeve
- (1) 4" Gate Valve
- (2) 4" 90°
- (27) feet of 4" Piping
- (1) 4" Thrust Collar

**3" Meter
4" IN & OUT of Vault**

Not-to-Scale

3220 SW Albright Drive B
Aldersgate
3" Water Meter Replacement
City Project # 281296.00
Site Option- C





Not-to-Scale

3220 SW Albright Drive B
Aldersgate
3" Water Meter Replacement
City Project # 281296.00
Site Option- C



CITY OF TOPEKA
UTILITIES

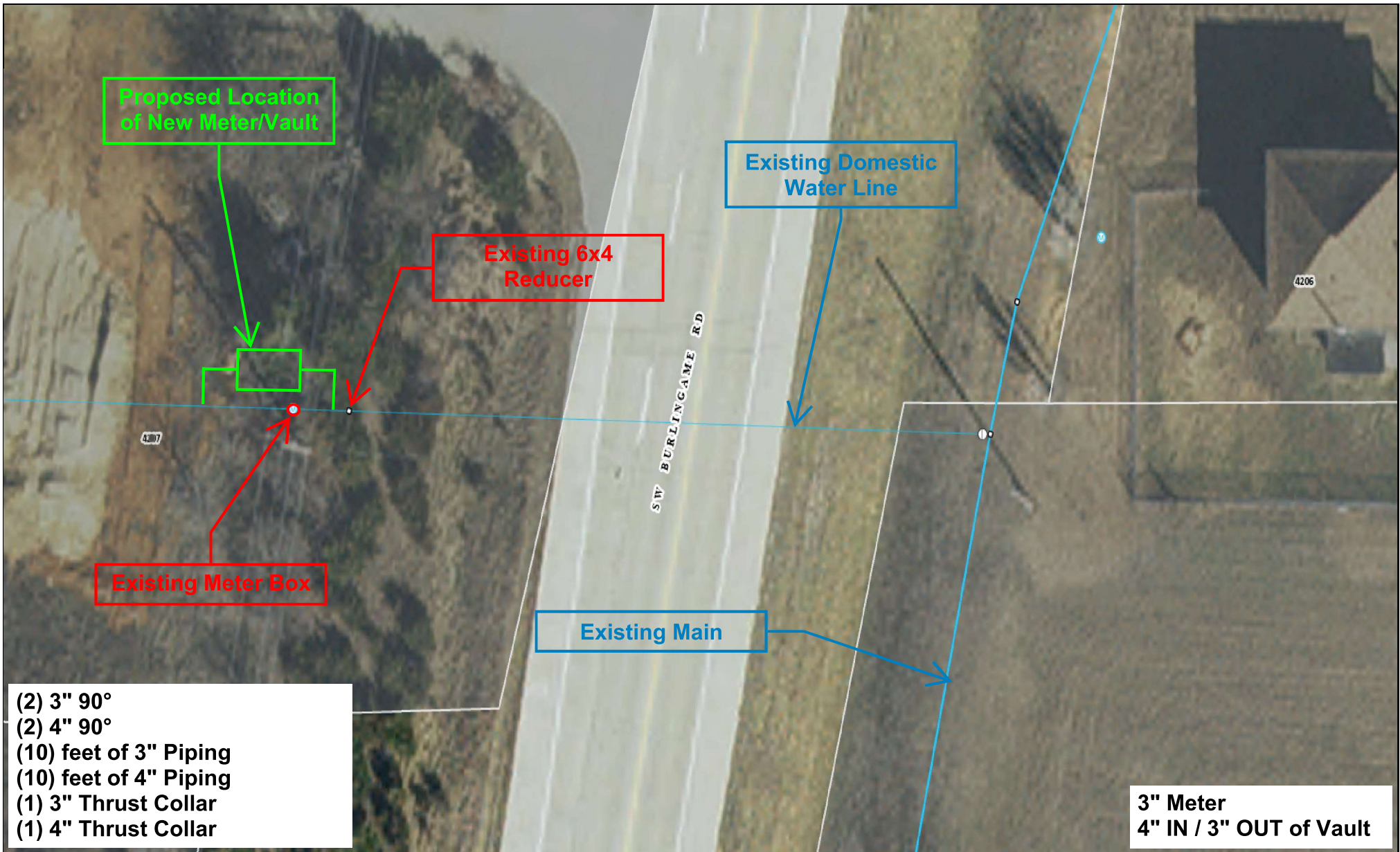


Not-to-Scale

4207 SW Burlingame Road
3" Water Meter Replacement
City Project # 281296.00
Site Option- B



CITY OF TOPEKA
UTILITIES



- (2) 3" 90°
- (2) 4" 90°
- (10) feet of 3" Piping
- (10) feet of 4" Piping
- (1) 3" Thrust Collar
- (1) 4" Thrust Collar

3" Meter
4" IN / 3" OUT of Vault

Not-to-Scale

4207 SW Burlingame Road
 3" Water Meter Replacement
 City Project # 281296.00
 Site Option- B



CITY OF TOPEKA
UTILITIES

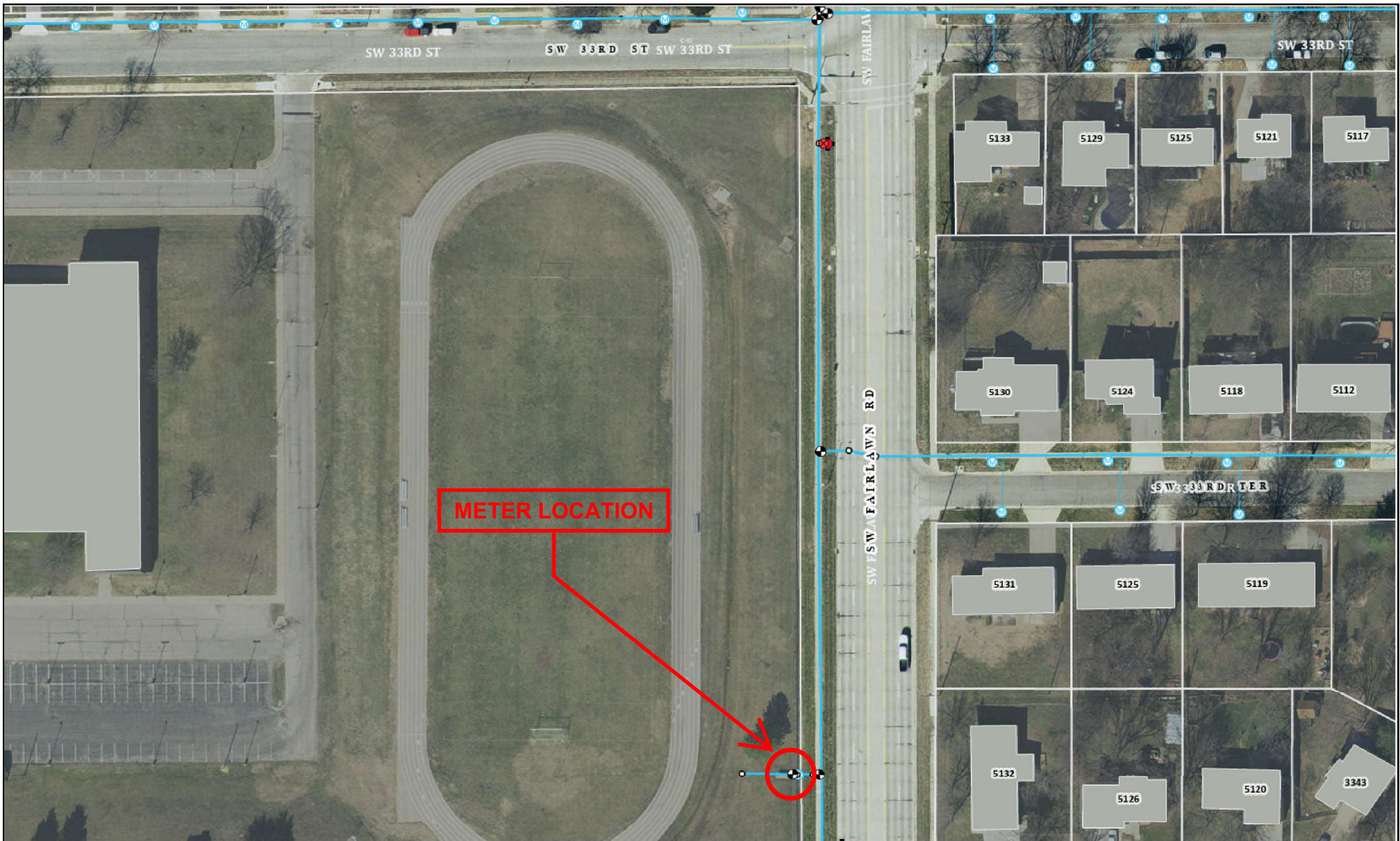


Not-to-Scale

4207 SW Burlingame Road
3" Water Meter Replacement
City Project # 281296.00
Site Option- B



CITY OF TOPEKA
UTILITIES

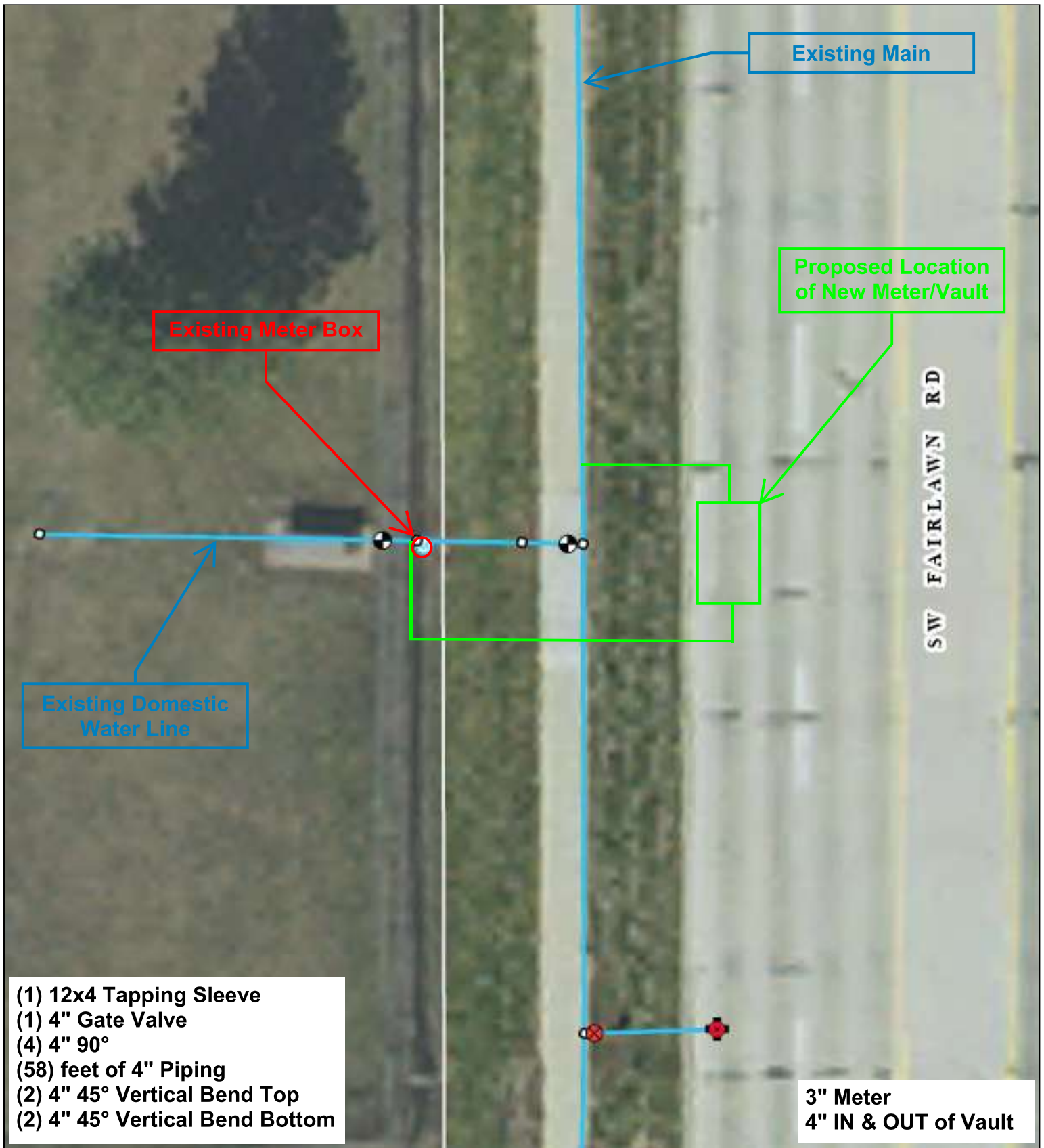


Not-to-Scale

5257 SW 33rd St
French Middle School
3" Water Meter Replacement
City Project #281296.00
Site Option- C



CITY OF TOPEKA
UTILITIES



- (1) 12x4 Tapping Sleeve
- (1) 4" Gate Valve
- (4) 4" 90°
- (58) feet of 4" Piping
- (2) 4" 45° Vertical Bend Top
- (2) 4" 45° Vertical Bend Bottom

**3" Meter
4" IN & OUT of Vault**

Not-to-Scale

5257 SW 33rd St
 French Middle School
 3" Water Meter Replacement
 City Project # 281296.00
 Site Option- C





Not-to-Scale

5257 SW 33rd St
French Middle School
3" Water Meter Replacement
City Project # 281296.00
Site Option- C



CITY OF TOPEKA
UTILITIES